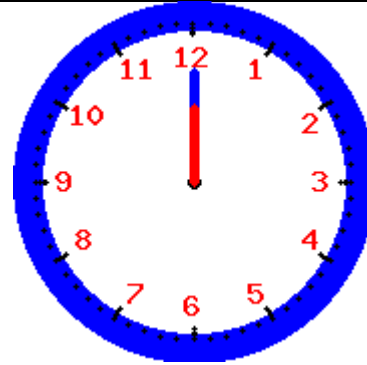


(Départ)

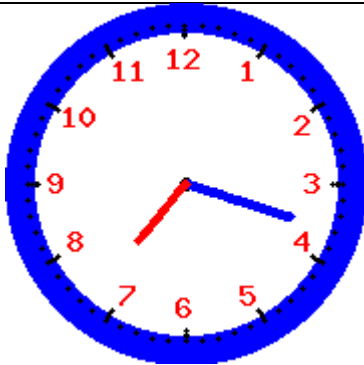
Qui a minuit ?



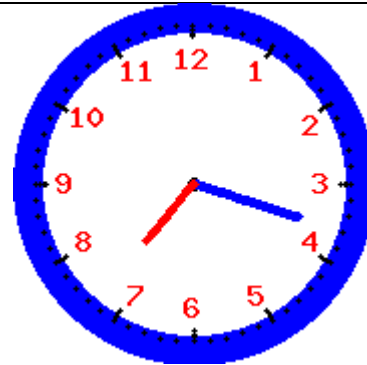
Qui a 7h18 ?



Qui a 19h18 ?



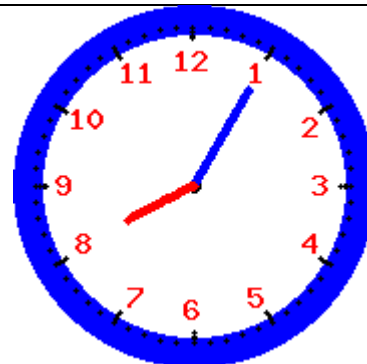
Qui a 20h05 ?



Qui a 8h05 ?



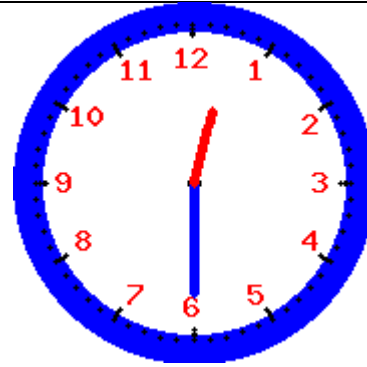
Qui a midi et demi ?



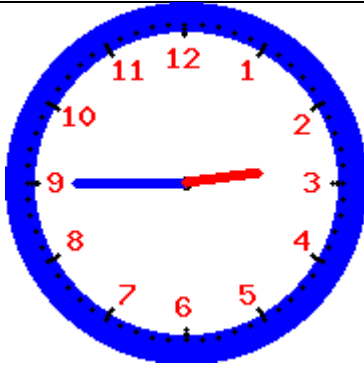
Qui a 12h30 ?



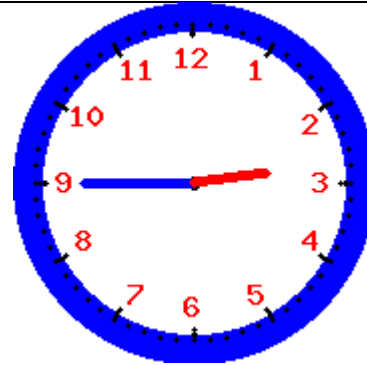
Qui a trois heures moins le quart ?



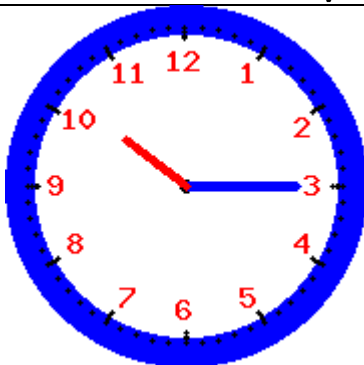
Qui a 14h45 ?



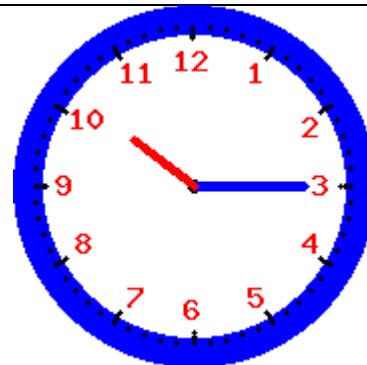
Qui a dix heures et quart ?



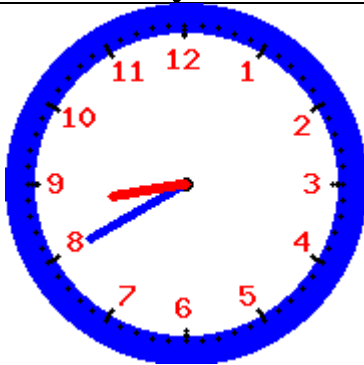
Qui a 10h15 ?



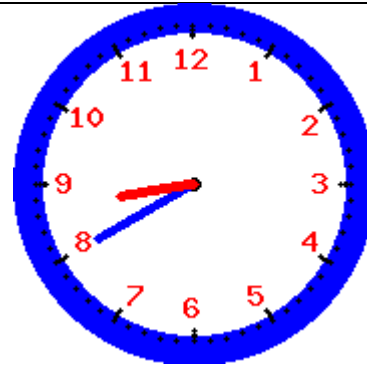
Qui a neuf heures moins vingt ?



Qui a 8h40 ?



Qui a 14h10 ?



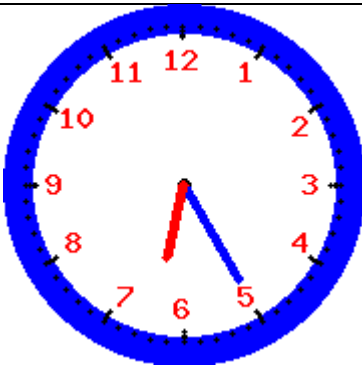
Qui a 2h10 ?



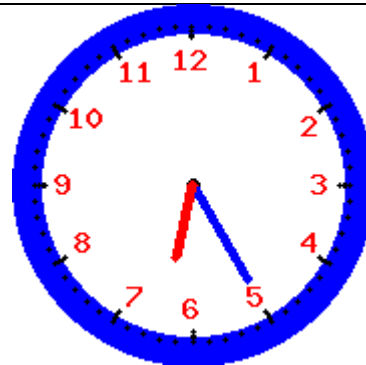
Qui a 18h25 ?



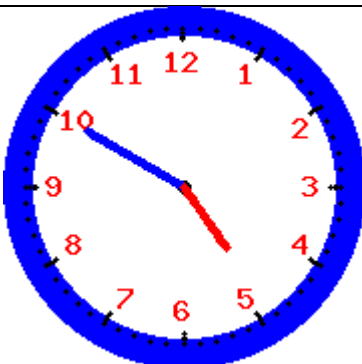
Qui a 6h25 ?



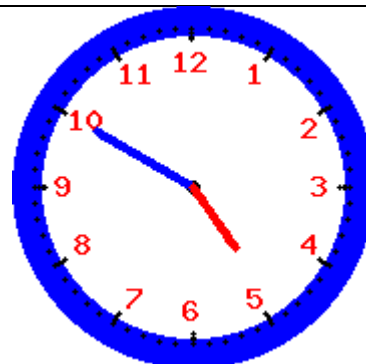
Qui a cinq heures moins dix ?



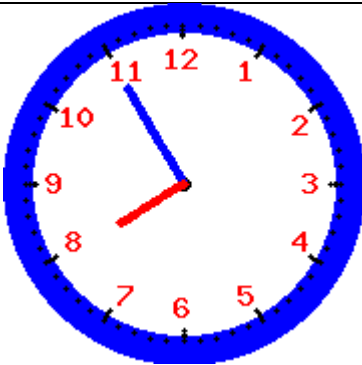
Qui a 16h50 ?



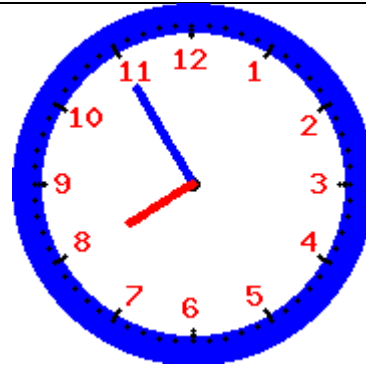
Qui a 7h55 ?



Qui a huit moins cinq ?



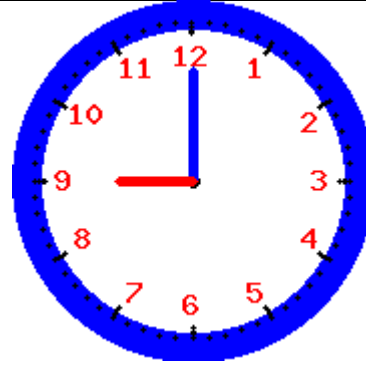
Qui a 21 h ?



Qui a 9 h ?



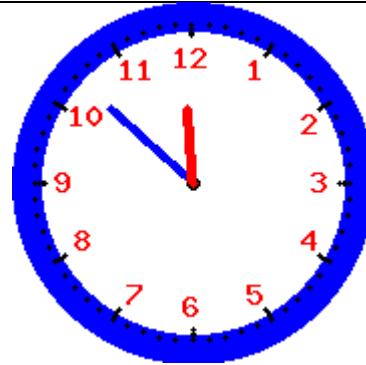
Qui a 23h52 ?



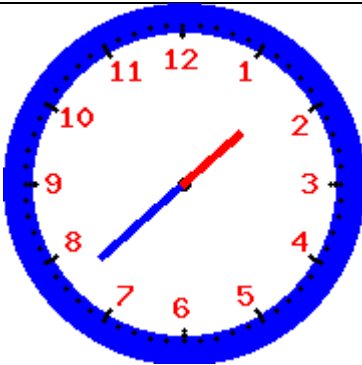
Qui a 11h52 ?



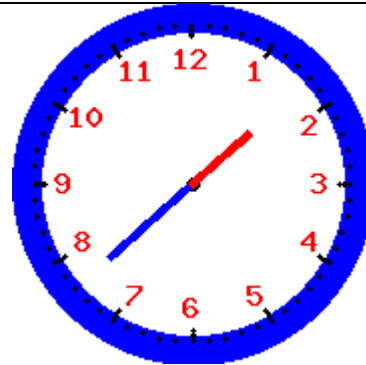
Qui a 1h38 ?



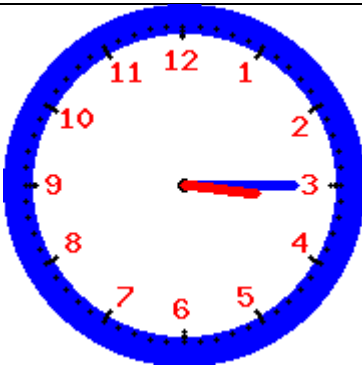
Qui a 13h38 ?



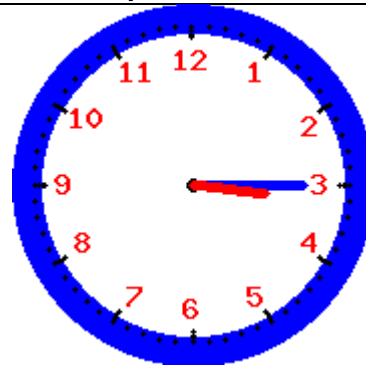
Qui a 15h15 ?



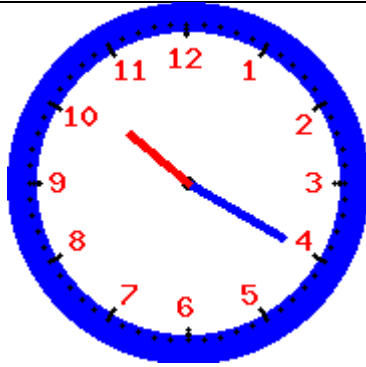
Qui a trois heures et quart ?



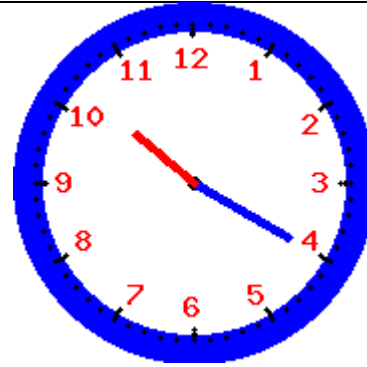
Qui a 22h20 ?



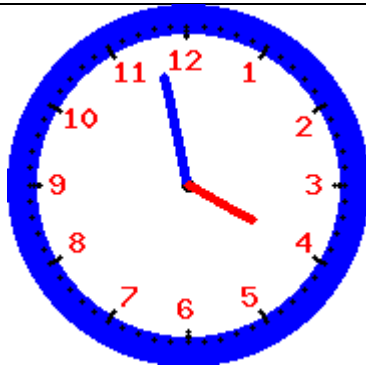
Qui a 10h20 ?



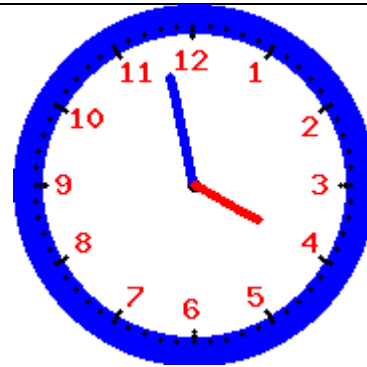
Qui a 3h58 ?



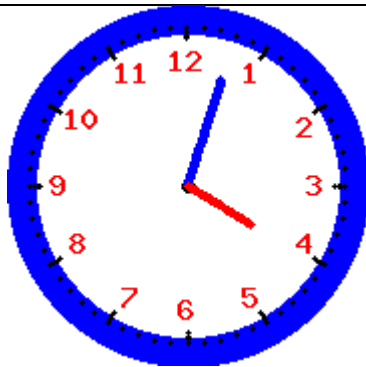
Qui a 15h58 ?



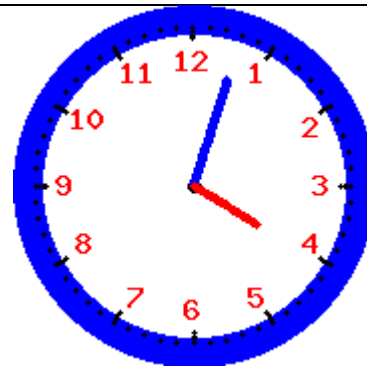
Qui a 4h03 ?



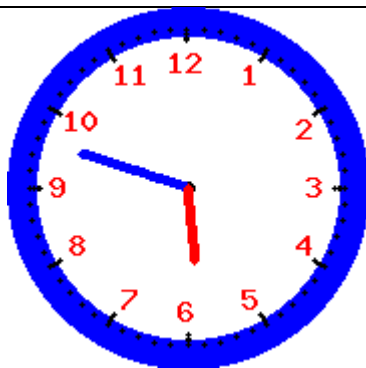
Qui a 16h03 ?



Qui a 17h48 ?



Qui a 5h48 ?



Fin

Contenu : 30 dominos. Tous, sauf le premier et le dernier, sont présents deux fois.

Règle du jeu :

Chaque élève reçoit un ou deux « dominos » (si possible, faire en sorte que les élèves qui ont les dominos marqués *départ* et *fin* aient deux dominos). L'élève qui a le domino « départ » lit sa question : Qui a minuit ? Le premier qui identifie minuit sur sa carte dit « moi ! » et a le droit de poser sa question à son tour. Et ainsi de suite jusqu'au domino « fin ».