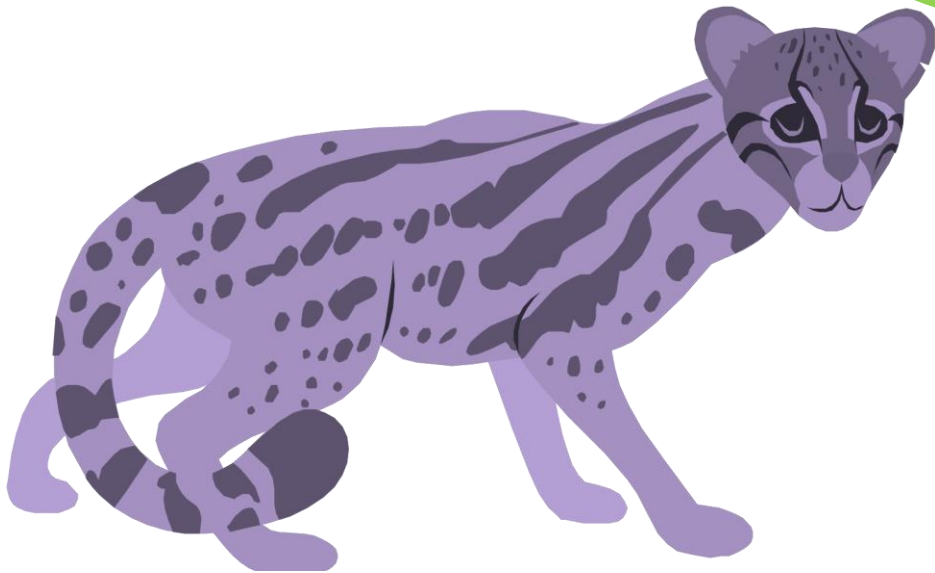


Les expansions du NOM

Adjectif qualificatif

C'est un chat sauvage.



Adjectif
qualificatif

Les expansions du NOM

Complément du nom

C'est un chat de gouttière.

The diagram shows the sentence "C'est un chat de gouttière." with the following annotations:

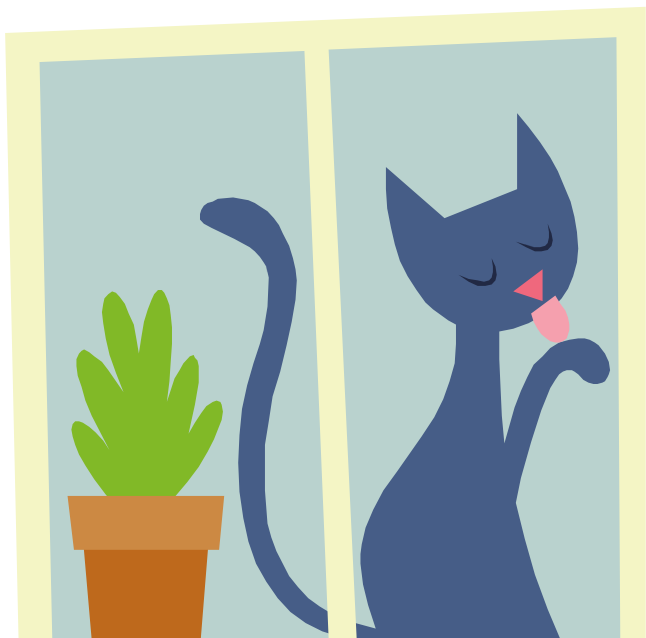
- The word "chat" is circled in green.
- The word "de" is highlighted in a red square, with the label "préposition" written below it in red.
- The word "gouttière" is highlighted in a green rectangle, with the label "nom" written below it in green.
- A green arrow points from the word "chat" to the phrase "de gouttière".
- Below the arrow, the text "Complément du nom" is written in green.

A stylized illustration of a green cat is positioned to the left of the text.

Les expansions du NOM

Proposition subordonnée relative

C'est un chat qui se lave.



qui

pronom
relatif

se lave.

verbe

Proposition
subordonnée relative